

3 Gbps Processing

Multi-port system, multi-Gigabit processing

Many networks have multiple incoming links able to carry attack traffic into the network.

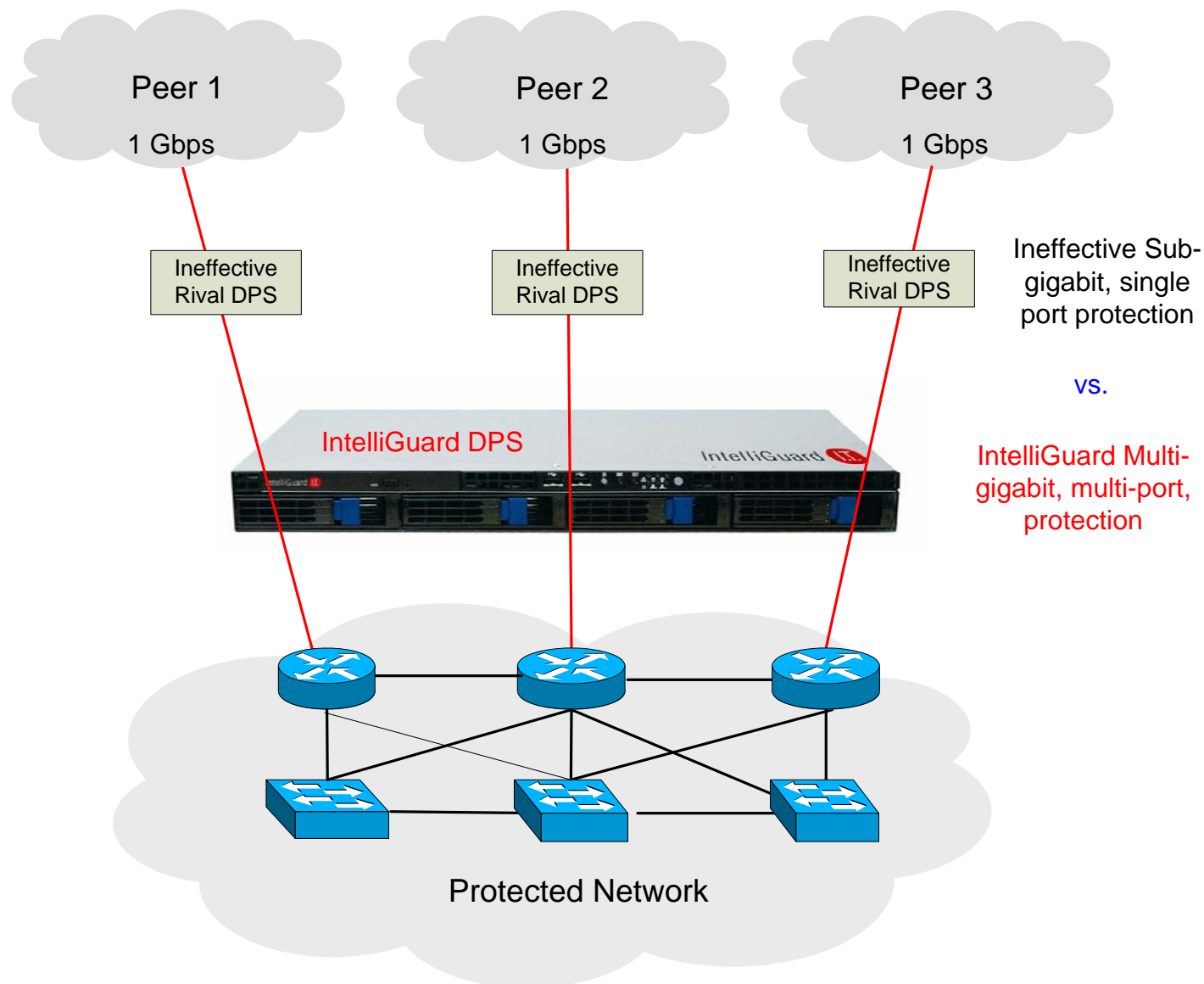
For example, 300 Mbps of attack traffic could arrive from each of three separate links. While link congestion at the network edge might not be apparent, the traffic aggregates within the network to overwhelm any number of links, servers and services.

To detect and filter such attacks a DDoS Protection System (DPS) needs an aggregate view of all traffic entering the network.

Rival anti-DDoS products lack the high throughput and numerous interfaces needed for this, and therefore cannot properly protect downstream network components in this scenario.

Deploying separate appliances on each incoming link provides at best partial protection. A device in this configuration that does not see all incoming traffic, does not know how much traffic downstream components are receiving nor how much traffic neighboring protection devices are blocking, and therefore does not know when to initiate or cease filtering.

IntelliGuard DPS's high throughput and port density enables multi-gigabit protection with multiple incoming links.



"Prolexic has also witnessed legitimate session floods followed-up by UDP and ICMP floods that use very small packets. Coupling up attacks in this manner has become increasingly commonplace" -- *The Prolexic Zombie Report Q1 - Q2 2005*